



**BUILDING CODE COMPLIANCE OFFICE (BCCO)
PRODUCT CONTROL DIVISION**

**MIAMI-DADE COUNTY, FLORIDA
METRO-DADE FLAGLER BUILDING
140 WEST FLAGLER STREET, SUITE 1603
MIAMI, FLORIDA 33130-1563
(305) 375-2901 FAX (305) 375-2908**

NOTICE OF ACCEPTANCE (NOA)

**Mulia Inc.
14820 Carmenita Road, Unit A
Norwalk, Ca. 90650**

SCOPE:

This NOA is being issued under the applicable rules and regulations governing the use of construction materials. The documentation submitted has been reviewed by Miami-Dade County Product Control Division and accepted by the Board of Rules and Appeals (BORA) to be used in Miami Dade County and other areas where allowed by the Authority Having Jurisdiction (AHJ).

This NOA shall not be valid after the expiration date stated below. The Miami-Dade County Product Control Division (In Miami Dade County) and/or the AHJ (in areas other than Miami Dade County) reserve the right to have this product or material tested for quality assurance purposes. If this product or material fails to perform in the accepted manner, the manufacturer will incur the expense of such testing and the AHJ may immediately revoke, modify, or suspend the use of such product or material within their jurisdiction. BORA reserves the right to revoke this acceptance, if it is determined by Miami-Dade County Product Control Division that this product or material fails to meet the requirements of the applicable building code.

This product is approved as described herein, and has been designed to comply with the Florida Building Code including the High Velocity Hurricane Zone.

DESCRIPTION: 4" Thick Face Glass Block.

APPROVAL DOCUMENT: Drawing No. 1344, titled "4" Thick Face Block Large Missile Impact Panel", sheets 1 and 2, prepared by W.W. Schaefer Engineering Consultant P.A, dated 12/13/2006, signed and sealed by Warren W. Schaefer, P.E. bearing the Miami-Dade County Product Control Revision stamp with the Notice of Acceptance number and expiration date by the Miami-Dade County Product Control Division.

MISSILE IMPACT RATING: Large and Small Missile Impact

LABELING: Each unit shall bear a permanent label with the manufacturer's name or logo, city, state and following statement: "Miami-Dade County Product Control Approved", unless otherwise noted herein.

RENEWAL of this NOA shall be considered after a renewal application has been filed and there has been no change in the applicable building code negatively affecting the performance of this product.

TERMINATION of this NOA will occur after the expiration date or if there has been a revision or change in the materials, use, and/or manufacture of the product or process. Misuse of this NOA as an endorsement of any product, for sales, advertising or any other purposes shall automatically terminate this NOA. Failure to comply with any section of this NOA shall be cause for termination and removal of NOA.

ADVERTISEMENT: The NOA number preceded by the words Miami-Dade County, Florida, and followed by the expiration date may be displayed in advertising literature. If any portion of the NOA is displayed, then it shall be done in its entirety.

INSPECTION: A copy of this entire NOA shall be provided to the user by the manufacturer or its distributors and shall be available for inspection at the job site at the request of the Building Official.

This NOA, revises **NOA # 06-1005.09** and consists of this page, evidence page E1, as well as the approval document mentioned above.

The submitted documentation was reviewed by **Mohammed Iqbal Shaikh, P.E.**



**NOA No07-1022.01
Expiration Date: 02/08/12
Approval Date: 11/15/07
Page 1**

Mulia Inc.

NOTICE OF ACCEPTANCE: EVIDENCE SUBMITTED

A DRAWINGS

1. Drawing No. 1344, titled "4" Thick Face Block Large Missile Impact Panel", sheets 1 and 2, prepared by W.W. Schaefer Engineering Consultant P.A, dated 12/13/2006 , signed and sealed by Warren W. Schaefer, P.E.

B TESTS

1. Test Reports on TAS 202 Uniform Static Air Pressure Test by Hurricane Engineering and Testing Inc.- Report #HETI-04-1389, dated 06/14/2004 and TAS 201 &TAS 203 Large Missile Impact & Cyclical Wind Pressure Tests dated 06/14/2004, signed and sealed by Rafael E. Droz-Seda, P.E.

C CALCULATIONS:

Calculations by W. W. Shaefer Engineering & Consulting, P.A. dated 09/26/06, signed and sealed by Warren W. Schaefer, P.E.

D QUALITY ASSURANCE

1. Building Code Compliance Office.

E MATERIAL CERTIFICATIONS

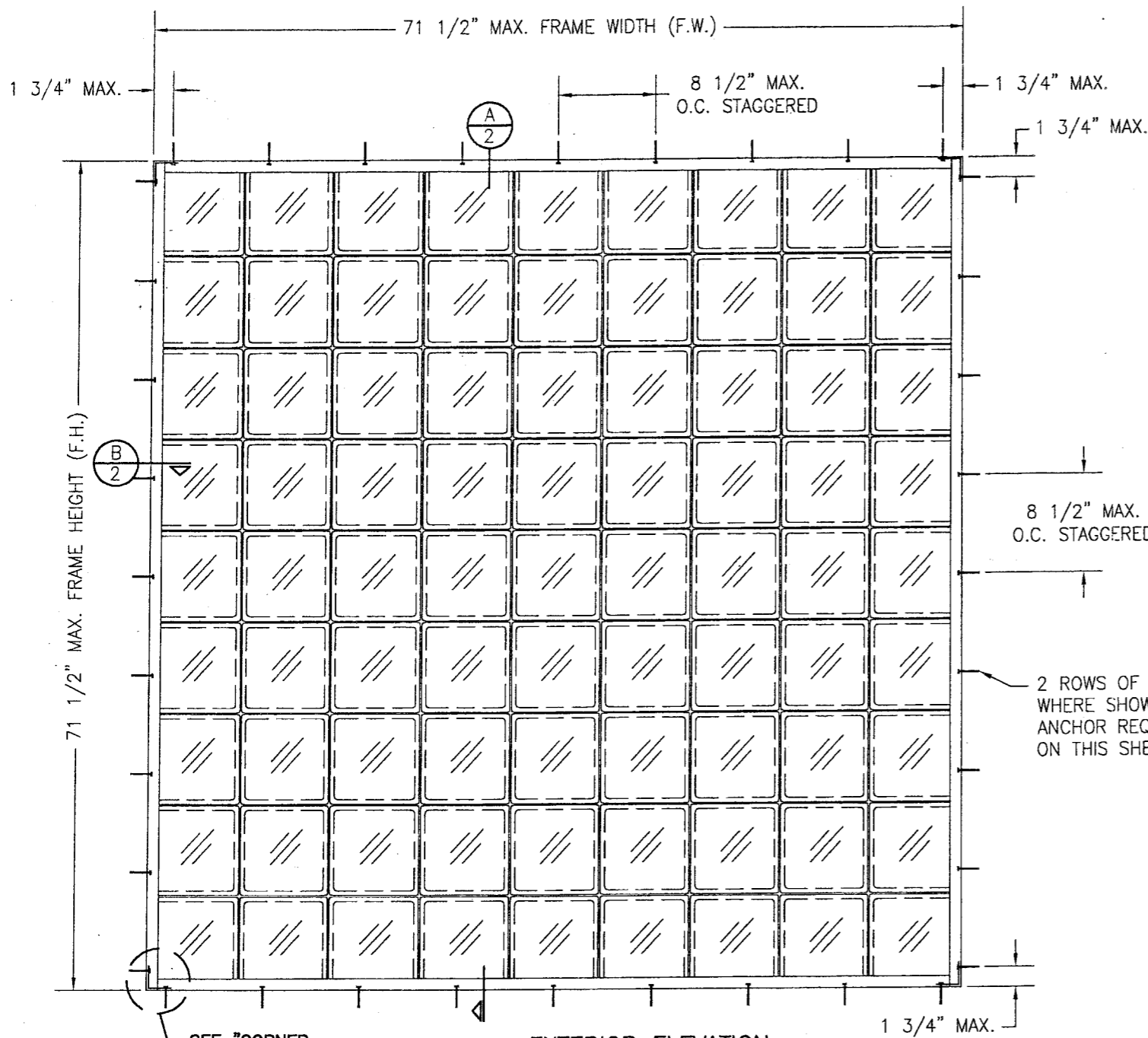
1. Notice of acceptance No. 06-0705.03 Issued to Royal Sierra Extrusions Inc. for "White Rigid PVC Exterior Extrusions for Windows and Doors" expiring on 09/07/11.

E STATEMENTS

1. 2004 FBC compliance letter issued by W. W. Shaefer Engineering & Consulting , P. A. dated 12/13/06, signed and sealed by Warren W. Schaefer, P.E.
2. Statement letter of no Financial Interest by W. W. Shaefer Engineering & Consulting , P. A. dated 09/26/06, signed and sealed by Warren W. Schaefer, P.E.
3. Addendum letter by hurricane Engineering and Testing , Inc. dated September 26, 2007 signed By Rafael E. Droz-Seda, P.E.



Mohammed Iqbal Shaikh, P.E.
Sr. Building Code Compliance Specialist
NOA N: 07-1022.01
Expiration Date: 02/08/12
Approval Date: 11/15/07



SEE "CORNER CONSTRUCTION" DESCRIPTION ON THIS SHEET

**EXTERIOR ELEVATION
GLASS BLOCK WINDOW**
SCALE: N.T.S.

GENERAL NOTES

1. THESE WINDOW SYSTEMS HAVE BEEN TESTED, ANALYZED AND APPROVED FOR DESIGN PRESSURES NOT TO EXCEED THOSE SHOWN IN THE "ALLOWABLE DESIGN LOADS" TABLE(S).
2. BUCKING, OPENINGS & BUCKING FASTENERS MUST BE PROPERLY DESIGNED & INSTALLED TO TRANSFER WIND LOADS TO THE STRUCTURE.
3. ALL HARDWARE & FASTENERS SHALL BE IN ACCORDANCE WITH THESE DRAWINGS & MAY NOT VARY UNLESS SPECIFICALLY MENTIONED ON THE DRAWINGS.
4. THE DETAILS & SPECIFICATIONS SHOWN HEREIN REPRESENT THE PRODUCTS TESTED & PROPOSED FOR WATER, AIR, IMPACT, CYCLIC & UNIFORM STATIC AIR PRESSURE TESTING IN CONFORMANCE WITH THE 2004 FLORIDA BUILDING CODE PROTOCOLS TAS-201, 202 & 203 FOR LARGE MISSILE IMPACT WINDOWS.
5. THESE WINDOW SYSTEMS HAVE BEEN DESIGNED IN ACCORDANCE WITH THE 2004 FLORIDA BUILDING CODE (FBC) INCLUDING HIGH VELOCITY HURRICANE ZONES (HVHZ).
6. IMPACT SHUTTERS ARE NOT REQUIRED WITH THESE WINDOWS.
7. ALL ANCHORS SHALL BE INSTALLED AS SPECIFIED ON THESE DRAWINGS. SPECIFIED EMBEDMENT TO BASE MATERIAL SHALL BE BEYOND WALL FINISH OR STUCCO.
8. ALL FRAME ANCHORS SECURING WINDOW/DOOR FRAME TO PRESSURE TREATED BUCKS OR WOOD FRAMING SHALL BE CAPABLE OF RESISTING CORROSION CAUSED BY THE PRESSURE TREATING CHEMICALS IN THE WOOD.
9. MATERIALS, INCLUDING BUT NOT LIMITED TO STEEL SCREWS, THAT COME INTO CONTACT WITH OTHER DISSIMILAR MATERIALS SHALL MEET THE REQUIREMENTS OF 2004 FLORIDA BUILDING CODE SECTION 2003.8.4.

ALLOWABLE DESIGN PRESSURE
+60/-65 PSF

CORNER CONSTRUCTION

FRAME CORNERS: BUTTED & MECHANICALLY JOINED FRAME CORNERS ARE REINFORCED WITH A 2" X 2" X 1/8" THICK X 3.85" LONG ALUMINUM ANGLE MOUNTED TO ONE FRAME MEMBER WITH (2) #6 X 1/2" SMS SCREWS. ONE LEG OF THE ANGLE IS ATTACHED TO THE SUBSTRATE WITH 2 FRAME ANCHORS.

2 ROWS OF FRAME ANCHORS WHERE SHOWN PER FRAME ANCHOR REQUIREMENTS TABLE ON THIS SHEET

FRAME ANCHOR REQUIREMENTS TABLE

OPENING TYPE (SUBSTRATE)	JAMB TO OPENING FASTENER TYPE	MINIMUM EMBED	MINIMUM EDGE DIST.
2X WOOD FRAME OR BUCK	NO. 10 SMS SCREW	1 1/4"	3/4"
CMU/CONCRETE	(1) 3/16" CONCRETE SCREW	1 1/4"	2"

(1) CONCRETE SCREWS SHALL BE ELCO OR ITW RAMSET/RED HEAD TAPCONS, HILTI KWIK-CON II OR POWERS RAWL TAPPER (HARDENED STEEL OR S.S.).

PRODUCT REVISIO
as compliant with
Building Code
Approved by 07-1022-01
Expiration Date 02/08/12
By *M. Khalil*
Miami Dade Product Control
Division

DRAWN BY: K.P.S.	CHECKED BY: W.W.S.
PLOT: 1=12	DATE: 05/17/06
NO.	REVISION DESCRIPTION
BY	DATE

DRAWING TITLE
4" THICK FACE BLOCK LARGE MISSILE IMPACT PANEL

MANUFACTURER
MULIA INC.
14820 CARMENITA ROAD; SUITE A
NORWALK, CA 90650
888-367-6854

CONSULTANTS
W. W. SCHAEFER ENGINEERING
& CONSULTING, P.A.
8895 N. MILITARY TRAIL, SUITE C-204
PALM BEACH GARDENS, FL 33410
PHONE: 561-775-4902 FAX: 561-775-4903

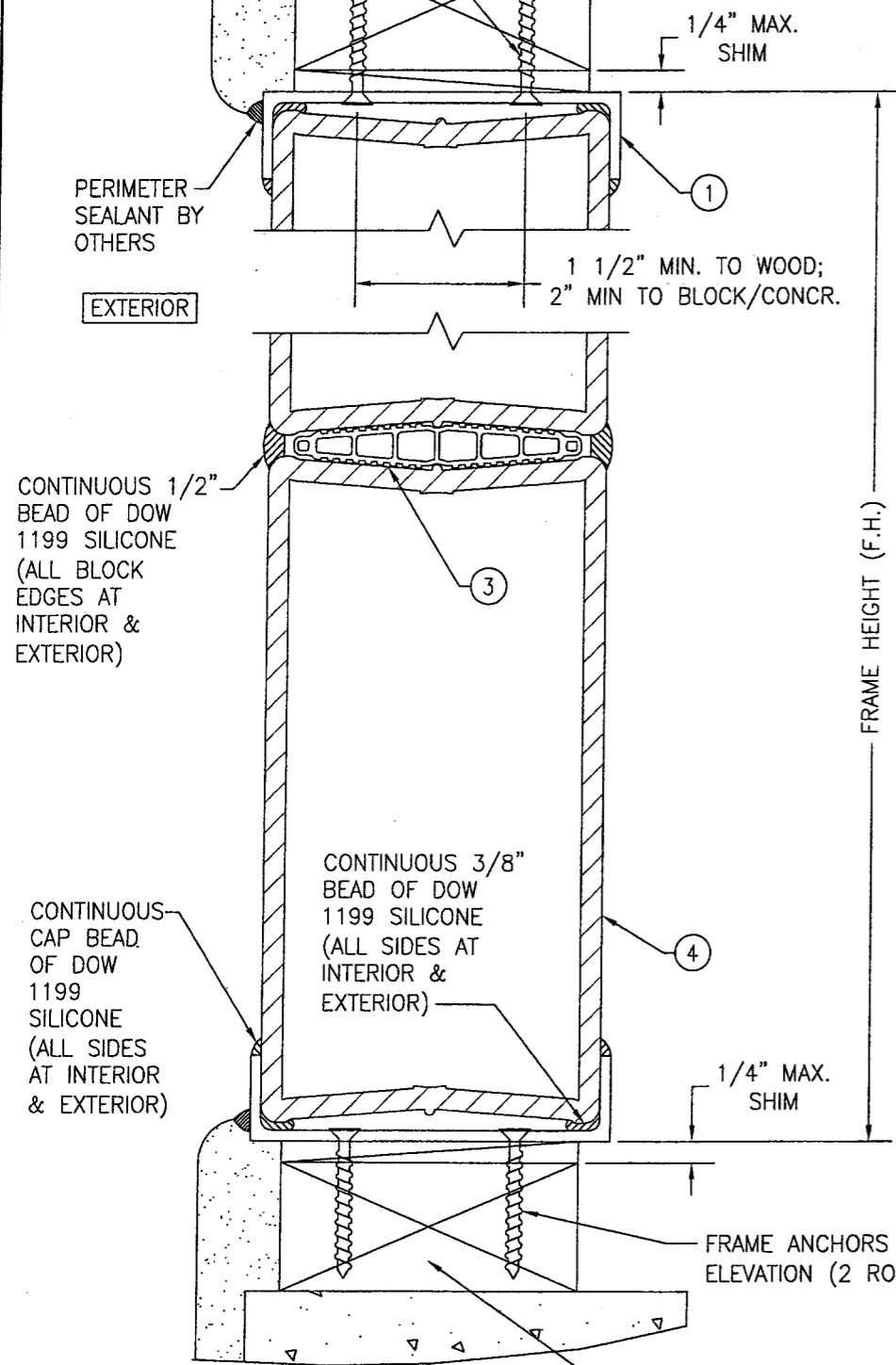
CERTIFICATION
DEC 13 2006

WARREN W. SCHAEFER, P.E.
P.E. NO. 44135

DRAWING NO. 1344	REV.
SHEET NO. 1	OF 2

FRAME ANCHORS PER ELEVATION (2 ROWS)

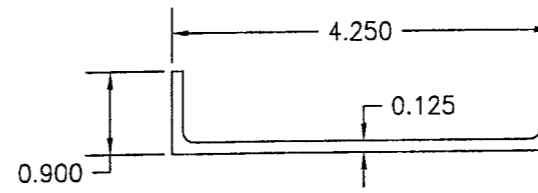
MIN. 2X4 NO. 3 SOUTHERN PINE WOOD BUCK/FRAMING AND BUCK/FRAME ATTACHMENT BY OTHERS



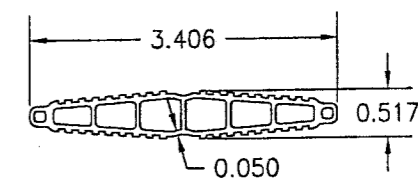
SECTION A
SCALE: 1/2 FULL

MIN. 2X4 NO. 3 SOUTHERN PINE WOOD BUCK/FRAMING AND BUCK/FRAME ATTACHMENT BY OTHERS

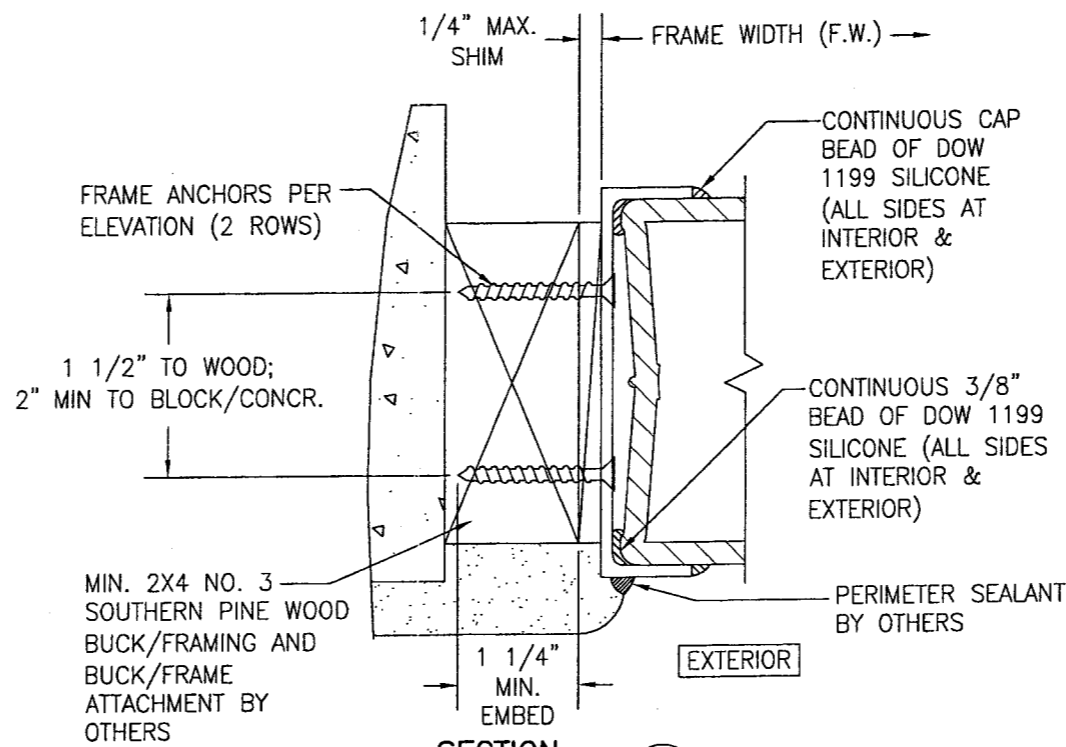
ITEM #	ITEM DESCRIPTION	MANUFACTURER/NOTES
PARTS		
1	FRAME CHANNEL (4.25" X 0.9" X 0.125")	6063-T5 ALUMINUM
2	REINF. ANGLE (2" X 2" X 3.85" LONG)	1/8" THICK 6063-T5 ALUMINUM
3	SPACER BY ROYAL SIERRA EXTRUSIONS	RIGID PVC (CONTINUOUS HORIZONTAL; SECTIONED VERTICAL)
4	GLASS BLOCK (7 3/4" X 7 3/4" X 4")	0.79" AVERAGE WALL THICKNESS



1 FRAME

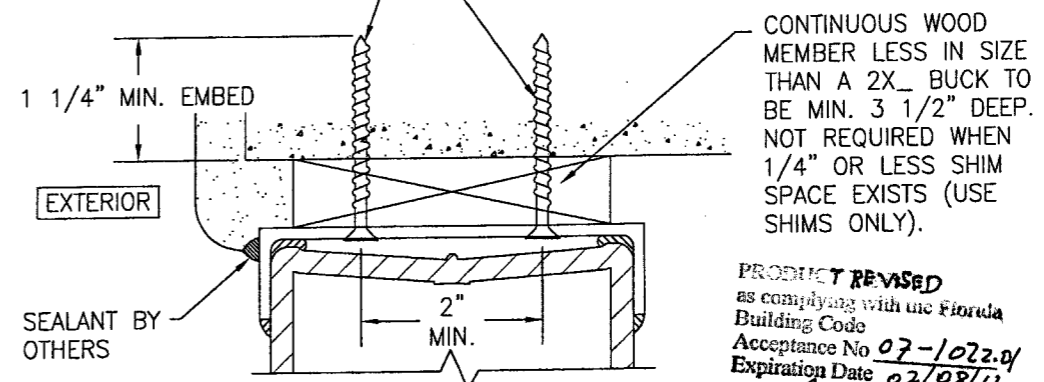


3 SPACER



SECTION B
SCALE: 1/2 FULL

3/16" CONCRETE SCREW TO REPLACE ANCHORS SPECIFIED IN ELEVATION (2 ROWS)



DIRECT MOUNT DETAIL IN BLOCK
HEAD DETAIL SHOWN; OTHER JAMBS SIMILAR.
SEE SECTIONS FOR DETAIL NOT SHOWN

PRODUCT REVISED
as complying with the Florida Building Code
Acceptance No 07-1022.07
Expiration Date 02/08/12

By *Warren W. Schaeffer*
Miami Dade Product Control Division

DRAWN BY: K.P.S.	CHECKED BY: W.W.S.
PLOT: 1=2	DATE: 05/17/06
DATE	BY
REVISION DESCRIPTION	NO.
DRAWING TITLE	
4" THICK FACE BLOCK LARGE MISSILE IMPACT PANEL	
CONSULTANTS	MANUFACTURER
W. W. SCHAEFFER ENGINEERING & CONSULTING, P.A. 8895 N. MILITARY TRAIL, SUITE C-204 PALM BEACH GARDENS, FL 33410 PHONE: 561-775-4902 FAX: 561-775-4903	MULLA INC. 14820 CARMENITA ROAD, SUITE A NORWALK, CA 90650 888-367-6854
CERTIFICATION	
DEC 13 2006	
WARREN W. SCHAEFFER, P.E. P.E. NO. 44135	
DRAWING NO.	REV.
1344	
SHEET NO.	
2	2